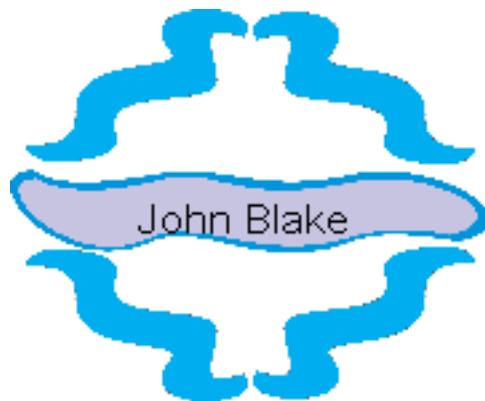


BaZi Report For John Blake



Authentic Destiny
<http://www.adeptiny.com>
31/05/2015

Your BaZi Master
Richard Tan, FCCA, CAM
Email: rtan@adeptiny.com

1 Introduction

BaZi, also known as the 4 Pillars of Destiny, is one of the systems used by the Chinese to predict an individual's destiny. This system is generally accepted as the most authentic and accurate prediction of an individual's destiny, whereby each of the eight characters is symbolized by one of the dualisms of yin and yang of the five basic elements. This is derived from the reduction of the birth data into the 5 basic elements, namely Wood, Fire, Earth, Metal and Water and analyzing the interaction of these elements represented. The 4 Pillars are derived from the Year, Month, Day and Hour and each of these Pillars is represented by 2 elements, one for the Heavenly Stem and one for the Earthly Branch. The accuracy of the prediction depends on how well your destiny is interpreted and diagnosed according to the interrelationship between these elements by the fortune-teller. This system is adopted for the prediction of one's destiny by the Chinese as it is believed that the universe is made up of and represented by these 5 basic elements of which human beings are also part of the universe.

BaZi can also determine an individual's potential, character and ability so that he can unlock his potential and ability in order to achieve success. It also enables him to ascertain the appropriate timing in planning and preparing himself like accumulating and organizing the required resources for the implementation of his project so that the chances of success is much higher. It also assists him to be a more tolerant and understanding person in terms of human relationships, especially when dealing with loved ones.

However, BaZi has its own limitations as it is one of the 5 factors believed by the Chinese that a person's success or failure is not exclusively dependent on destiny alone. The 5 factors that will also affect the success or failure of a person ranked in order of importance are:

- **Destiny** - Destiny is determined by the day and time we were born.
- **Luck** - This is the pattern of ups and downs one is experiencing during one's lifetime. It is generally accepted that luck plays an important role in our life.
- **Feng Shui** - The environment and the surroundings we live in and it refers not only to the physical but also the cosmic aspect of our surroundings which include time and space dimension.
- **Character** - This refers to the personal characteristics of a person's character, like honesty, kindness, helpfulness, charitable, hardworking, forgiveness and other positive traits.
- **Education** - This not only refers to a person's academic achievements but also include professional training, acquiring technical know-how and other general knowledge like politics, economics, world affairs and other subjects that can assist one's career.

However, besides the 5 factors given above that determine an individual's success or failure in life, other factors such as the country one is residing in and the profession one is pursuing can also influence its outcome. The political and economic situations differ from one country to another at any given point in time. Likewise, the country's and world's current demand for goods and services make certain professions and trades in greater demand, whereby one can be remunerated with better income and profit if one is in the right industry and service sector. Therefore, although two persons are born at the same time but whose professions are not the same, their level of income may be different but the pattern of ups and downs will be the same.



Diagram - Factors affecting the Success and Happiness of a person

BaZi can assist a person in:

1. Choosing the correct career for the betterment of it.
2. Timing of an investment or venture.
3. Choosing the right partner whether in business or marriage.
4. Enhancing personal feng shui like siting or facing the correct directions, wearing of the right colors or ornaments, interior design to enhance health and harmony.
5. Predicting misfortunes and taking positive action to neutralize them.
6. Discovering your child's hidden talents so that you can guide him/her to do a course which he/she can excel in.
7. Selecting an auspicious date for marriage, shifting of home or opening ceremony.
8. Selecting an auspicious birth date for those women who want to have their babies delivered through caesarean.

Destiny cannot be changed but can be improved. Improving one's destiny means one can reduce one's loss during a downward phase and enhance one's gain during a period of good luck but it cannot turn a loss into a profit.

The aim of this prediction is to enable you to have a clearer view of your future but you should not solely depend on it to make decisions as other factors also play a role in achieving your success.

2 Your Personal Reading

SELF-ELEMENT Metal (Yang Metal)

CLASSIFICATION Zheng Guan Formation(Power/Status)

STRENGTH OF SELF-ELEMENT ... Weak (Very weak)

YOUR FAVOURABLE ELEMENTS¹:

1. Excellent: Water
2. Good: Earth

YOUR MIXED ELEMENTS

3. Mixed: Metal

YOUR UNFAVOURABLE ELEMENTS²

4. Poor: Fire
5. Caution: Wood

Note:

See section on Interpretation of Luck Pillar and Yearly Luck to refer to your Current and Future Luck Pillars in terms of Excellent, Good, Mixed, Poor and Caution.

¹*Favorable elements are elements which are good for you especially during the period or years when you are experiencing good luck.*

²*Elements which are bad for you where the unfavourable elements fall into the respective Luck Pillars in both the Heavenly Stem and Earthly Branch for the period(s) concerned.*

3 Personality, Romance and Profession

3.1 Personality and Character

Dependable and fickleness is the best description of you. You are bright and usually extremely, biting funny. You are likely artistic and can be good with your hands. You like gossiping and are curious about everyone you meet. It is rare that you divulge information on yourself unless asked. You are also instinctive and have the capacity to laugh at yourself. Eloquent and good at foreign languages, you can also imitate well and pick up nuances easily. You have a kind of jaundiced view of other people and how they lived and like to put down other people whom you disapprove, or whom you find them silly or ridiculous.

You have a grandeur, strong and impressive appearance. You like status quo and always like to be admired and try to upkeep such image dearly. As a result of such premise, it is difficult for you to sustain such image. A determined and firm person you are also stubborn once you set your mind on something. You are quite prepared to take risks and can get jealous easily.

You are a thoughtful, good-humored and sentimental person. A generous, highly moral and principled person, you strive to please people whom you know. You put complete trust in those you believed in and allow others to take advantage of you. You can make sacrifices or readily pay at all cost for the sake of keeping peace when harassed. You can be most devoted to those whom you love or care for. For your good and compassionate nature, you always inherit money or help once you are in need from unlikely source.

A person of great potential, you are competent and self-assured. You can make up your own mind and always keep your emotions to yourself. Your main priority is vested in your spouse or companion.

3.2 Romance and Compatibilities

You are a person who wants to live one-on-one with another. The chances you will remain as a bachelor is remote as somewhere, somehow, someone will come along. You will be attracted to people who appear to hold things together and you devote yourself to him/her. You will never stand in the way of an ambitious partner who wants to get successful. You are very concerned of what your loved one thinks and their respect for you and you secretly appreciated him/her in return. You are most compatible to Libra and Aquarius born in Rabbit/Pig years.

You are the aggressive rather than passive type and you will go after a man if you find him interesting. You will let the man know if you find him crude, outrageous or intolerable.

You are attracted to people especially those of the opposite sex and can get along well with them as they possess a lot of your favourable elements. In your case it is people who possess the excess or strong elements like **Water** and **Earth**

However, there are times you can be attracted to people who may not possess your favourable elements but he/she may be going through a Luck Pillar which are favourable elements of yours. Thus when this Luck Pillar has passed, then there will be a change of attitude or liking, which you have previously encountered. The changing elements will subconsciously affect your mood and feelings towards your loved ones. That explains why we often find that someone suddenly does not appear to be attractive anymore. Likewise, this might also happen to you when somebody who once loved you might find you no longer attractive.

You are likely to encounter romance or "flower of romance" during the Luck Pillar, year, month or even day where the period concerned is represented by the animal signs of **Rat** and **Rooster**.

3.3 Profession

Though you are a devoted, interesting and terrific employee you will never be satisfied with your boss. Although you do not want to be a boss, you cannot make a good one either. Since you are talented and artistic, you can perform well in an entertainment-related career.

You are not afraid to start in a low position and work hard to achieve your goal. Due to your determination and hard work it is very likely you will reach a high position, as you get older. Whatever fields you have chosen you are likely to end up in a front-man position in due course. You are suited for working in the civil service and if you are in the private sector you will work in the management of an organization or in the field of creativity. Your ambition is high and you like to do big things.

You are likely to adopt or are currently employed in a profession whereby the elements are dominant in your 4 Pillars of Destiny. The elements are *Fire* and *Water* that are represented as follows:-

Fire	Energy, cooking, electricity, electronics, trading of stock market, commodities and futures, restaurants, entertainments and industry that is fire based.
Water	Shipping, beverages, dyeing, fishing industry and industry that is water based.

However, you can do better if you can adopt a profession where it is represented by the elements which are favourable to you. Your favourable elements are *Water* and *Earth*. The profession or field representing them are as follows:-

Water	Shipping, beverages, dyeing, fishing industry and industry that is water based.
Earth	Property, construction, mining, chemicals, building materials, pottery, glass, ceramic and clay and industry that is earth based.

4 Interpretation of Your Personal Reading

Interpretation of your personal reading extracted from the Master Chart for the 4 Pillars of Destiny. These are the main aspects derived from the Chart in addition to the above readings like Personality/Character, Romance/Compatibilities and Profession.

4.1 Friends/Associates/Colleagues

1. You are a conservative, reserve or unsociable person and prefer to live a world of your own. As a result, you will have only very few friends in your lifetime. You are likely to be a homely person and enjoy doing domestic chores or take up hobbies like cooking, sewing, gardening, fish rearing, collecting antiques or any other hobbies like surfing the internet which do not need group activities like group outings.
2. Your benefactor (nobleman) is likely to be a person or persons born under the following animal signs. Also you will receive assistance from these people during those Luck Pillar/Year Pillar represented by those animal signs.
 - Ox
 - Sheep
 - Rat
 - Monkey

4.2 Competitors/Opponents

You will be faced with reasonable fierce competition in your lifetime whether for position, authority, fame or recognition. If you are an artist or actress you will compete with them for fame and popularity. If you are a politician or executive you will face challenges from contemporaries or colleagues within your own organization. You got a few brother and sister in your family.

4.3 Unconventional Intelligence/Creativity/Innovative

You are quite a materialistic person and would not mind sacrificing for it. You will live an expensive or luxurious lifestyle if you have the means to do so. As a result you might work hard for it or may consider any options that can assist you so long as it can fulfill your aspirations like marrying into it. Therefore you are quite bold in making decisions and taking actions to implement your plans or ideas. You enjoy partying and other forms of entertainment such as dancing, movies and concerts more than books, theatre or fine arts. You enjoy food as much as others and do not mind paying expensive meals, or dinners and giving generous tips. As a result of your enjoyment for food you may have weight problem in the later years if you are not careful.

4.4 Intelligence/Expression/Aspiration

You are considered an average intelligent, talented and creative person and if properly developed and applied you can achieve success in your chosen career. You can also hold an executive position if you work for people or organization. However, if you choose to become your own boss, then you should become quite successful, be it in academic, professional and research work where creativity, intellectual or cerebration is required.

4.5 Unconventional Wealth or Income

You just do not have any luck in gambling or speculation. So stay away from anything that deals with such activities like gambling in casino, striking jackpot, speculation in futures or commodities and in stock market. Just stay away from such activities and concentrate on your career or business. Otherwise, you will incur irrecoverable losses and financial difficulties once you get yourself involved.

4.6 Direct Wealth/Main Occupation/Direct Income

You may hold a steady and comfortable job either as an executive or managerial personnel in any organization. Whether you are a businessperson or professional you can be reasonably successful. You are more suited to work as an entrepreneur or as a self-employed than working for others. Financially, you can be well off as a result of your success as an entrepreneur, if you happen to be one. If employed, you are likely to be entrusted to handle monies or financial matters such as working as a cashier, accountant, foreign currencies dealer, financial controller or treasurer. However, if given a choice you prefer to be an entrepreneur.

4.7 Unconventional Authority/Fighting Spirit/Determination

You are an average determined person with modest fighting spirit and may have an interest in non-profit organizations. You may participate and hold minor positions such as an ordinary or a junior committee member in a charitable, social, scientific and spiritual organization. This includes your interest in the participation such as registration as an ordinary member, in non-government, religious, charitable, trade/profession or political organizations.

4.8 Status/Power/Pressure

{'zh-cn': 'u', 'en': 'u'}You are a very disciplined person who can be very firm and authoritative in your dealings especially with people. You will enjoy a high status and standing in society and are likely to associate with the upper echelon society. You can become a president or chief executive officer of a big commercial, financial, industrial organization or a high-ranking officer working for the government. You can become a top politician or civil servant if you are in the civil service. Otherwise, you can become a head of any commercial organization. Power and authority always associate with pressure or stress as you are

constantly under scrutiny. Such executive position of power or authority cannot be achieved unless you have encountered a long period of uninterrupted good luck pillars. You also need a good academic or professional qualification to hold such important position. These good luck pillars will provide you the opportunities and ample time for building up of your career or professional experience and the accumulation of trust for the promotion to such important position. You may enjoy a high status or standing in society and can also be popular among your peers only if you are given such important position. Otherwise, you cannot enjoy such high status or standing but instead faced tremendous pressure and high stress that can seriously affect your health when encountering such bad phases. This may also indicate that you are working as a sub-ordinate, reporting to too many bosses and have to report to all of them thus putting you under tremendous pressure for all levels. It may imply that you may not necessarily sit in a high position that commensurate with this kind of pressure. The other possibility is may also indicate that your children give create a lot of problems for you. You definitely will get married and the chance of you staying single is very slim. Even if you decided to stay single it will be difficult as men are constantly wooing you. If you decide to get married the chance of you marrying to a successful man is great because you have a pool of suitors to choose from in accordance to your expectation. The man you married is likely to be someone in the upper echelon of society. Since teenage you have a lot of men attracted to you and that continues through your married life. Your grace, charm and attractiveness will make you the center of attraction for men. Most men will like to be given the opportunity to know you and also they are many secret admirers. Everywhere you go there will be followings and many new men will introduce themselves due to your charm. This creates too many opportunities and you will be drawn into it, as the temptations are too great to resist. Thus having extramarital affairs is not a surprise because of constant attentions focusing on you.

4.9 Indirect Resource/Support/Education

By nature you have little interest in religion, philosophy, occult, supernatural things or spiritual teachings. However, you may in your later years become more pious due to some unpleasant experiences. Generally you are a practical and down-to-earth person. You are not likely to resort to illegal means in achieving your objectives. Therefore, you are unlikely to get involved in illegal schemes or means of earning a living. In this aspect you not likely to get into trouble with the authorities.

4.10 Main Resource/Formal Education/Discipline/Conservatism

You are academically inclined and stand a good opportunity in pursuing tertiary education or even a post-graduate course. You will do very well academically and may pursue your career towards research and development or career that requires an analytical mind. You can become a lecturer in the academic world or become a senior economist, system analyst, researcher or town planner in the commercial world. This includes other respectable professional such as solicitor, accountant,

engineer, technical specialist, computer, medical and other special trades. In fact you are endowed with authority and status in your chosen profession provided you have the required academic or professional qualification. \nHowever, your talent may not be exploited if during your school or college years you are going through poor luck pillars and also without the moral and financial support of your parents. This is the most crucial period when you may leave school or college, thus preventing you from the continuation in pursuing your academic or professional qualification. For some reasons if you are not highly educated in the field of academic or professional career, you are by nature a critical, careful, conservative and analytical person. Anything that needs your attention or approval is critically examined and will be probed into the bottom before an opinion or decision is made. You are intelligent, proud of your integrity and can also be a self-centered person. As a resourceful person you can apply this talent for any of your endeavor such as career, interest, finance or human relationship.

4.11 Academic Star

You are likely to excel in your studies and are academically inclined. You do not find difficulties in understanding any subjects of your choice, thus you find it easy to study without putting extra effort than those who do not possess such academic star.

Note:

The professions or careers stated as in Sections 4.1 to 4.10 only indicate your potential talent or inclination towards these professions. However, it is possible to have a few of the abovementioned professions.

In some cases, there may be isolated conflicting writeups in Section 3.1 (Personality and Character) and Section 4.1 to 4.10. This is due to the supplementary aspects of Section 3 which may in few cases cause a conflicting writeup. In such cases, you should adopt the relevant paragraph(s) that are applicable to you and ignore the irrelevant portions.

5 Your Relationship with Loved Ones

5.1 Spouse

Your spouse is likely to be a capable, intelligent and talented person. You are likely to be much in love with your spouse, sacrifice for him and will devote a large part of your life for the partnership. It is most fortunate for your spouse to have you in this life partnership.

Note: This is only applicable to those who are married.

5.2 Children

Your son(s) will be closer, supportive and may be more filial to you than your daughter(s) if there are any. He may listen and readily take your advice and is likely to be obedient to you. You do not have to worry very much for him when he grows older and can be a good citizen. It will be a blessing to you to have such a good child, as you know it is not easy to have filial children although we have sacrificed a lot for them during the earlier years.

Note: This is only applicable to those who have children.

5.3 Parents

For some reason you do not have a happy childhood and you have to struggle to build up your own career without or with little support from either any one of your parents. You have to struggle harder than most people in order to be successful. Despite this adversity with one of the parents who can instill strict upbringings you can be more successful in the future. Discipline is one of the prerequisites for a person to have in order to be successful for whatever endeavor one has to undertake. This is one of the golden rules of the makings a successful person. Therefore, it is a blessing in disguise for the early experiences encountered and this has enabled you to build up a strong character that is one of the factors of achieving success in this competitive environment.

6 Interpretation of Luck Pillar and Yearly Luck

Interpretation of the Luck Pillar and the Yearly Luck are summarised on a year to year basis, ranked in terms of Excellent, Good, Mixed, Poor and Caution. This prediction provides you with a useful guide to help you in making better decisions for the coming years.

6.1 Your Past, Present and Future Luck Pillars

Table 6-1 - Your Past, Present and Future Luck Pillars

90-94	80-84	70-74	60-64	50-54	40-44	30-34	20-24	10-14	Starting age From - To (H.S.)
LM	LM	LG	LM	LP	LE	LM	LP	LG	State of the Luck Pillar
95-99	85-89	75-79	65-69	55-59	45-49	35-39	25-29	15-19	Starting age From - To (E.B.)
LC	LC	LG	LE	LG	LG	LG	LE	LM	State of the Luck Pillar

Note: LE=Excellent, LG=Good, LM=Mixed, LP=Poor, LC=Caution

Please see Appendix D for an explanation of the grading of the Luck Pillars.

Note:

The period between the age of 75 to 79 is a period of clash between the Luck Pillar and the Year Pillar, also commonly known as the 'Clash with the Grand Duke of Jupiter'. It is considered an auspicious period as some unexpected events such as a windfall, marriage, promotion, fame or recognition are likely to happen.

6.2 Your Personalized Luck Index Chart for the next 36 months.

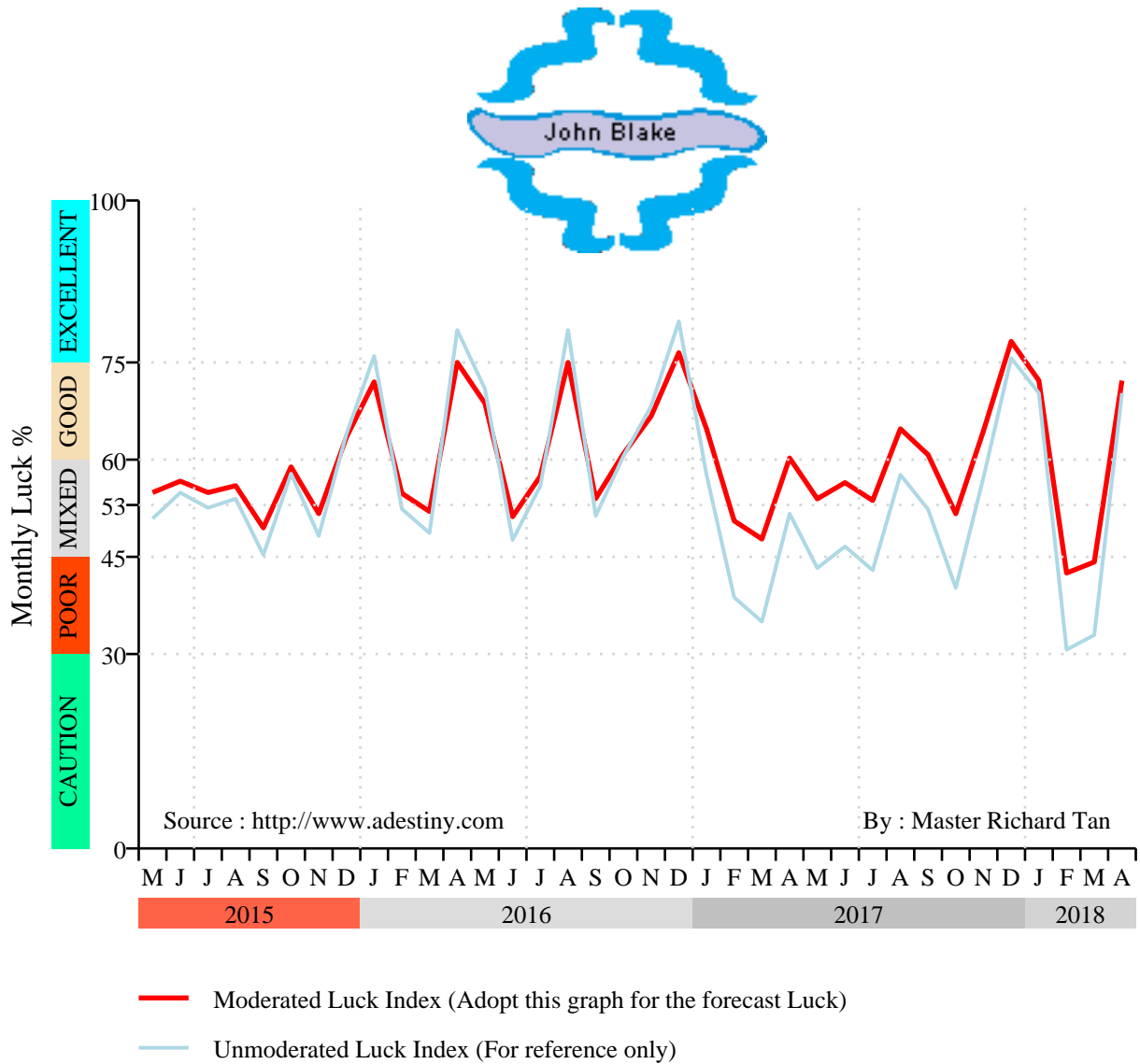


Figure 6-1 - Monthly Luck Index

Note:

Your Personalized Luck Index only indicates the forecast fluctuations on the pattern of your Luck indices and subject to :

1. The effect of the political, government policies and economic conditions of the region or country you are residing or working.

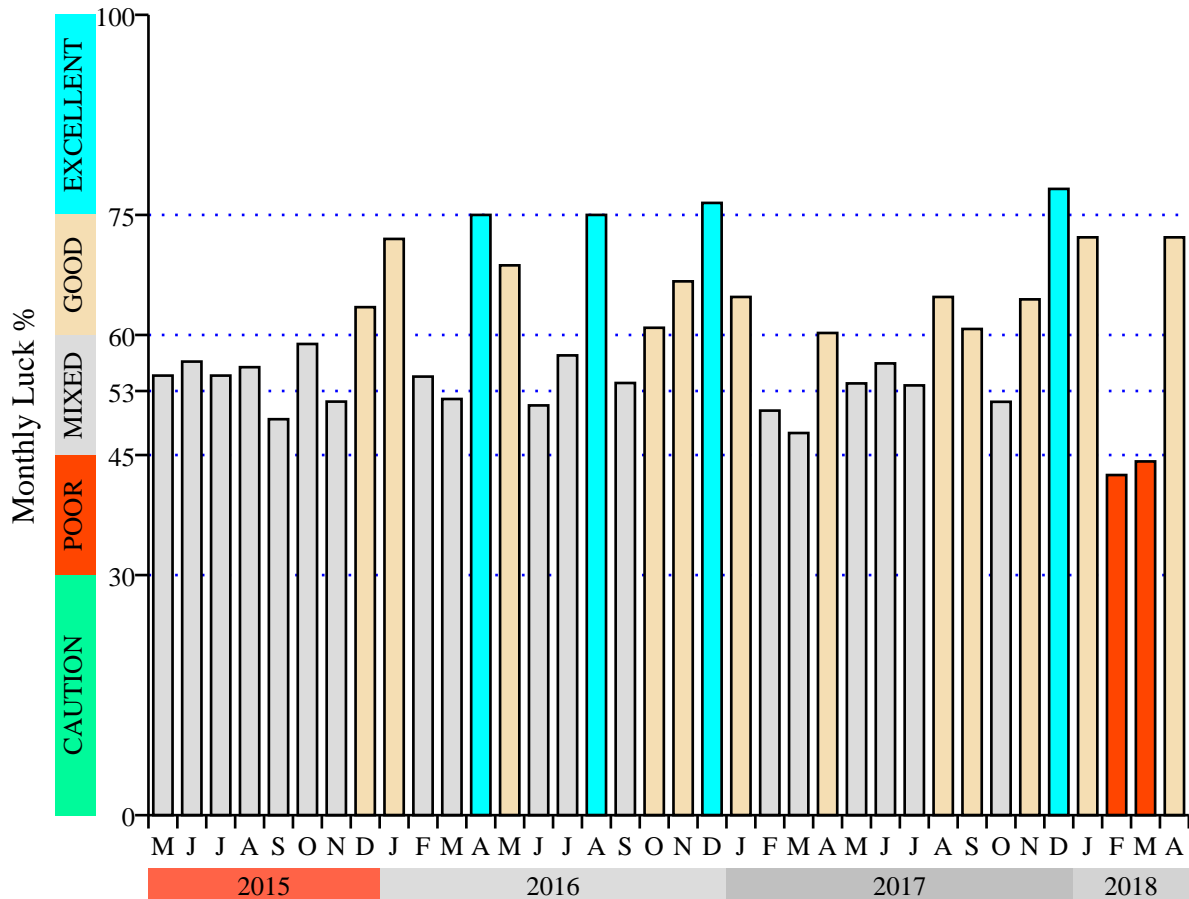
2. *The effect of globalization that affect the changes in demand of your business or profession due to other countries that produce the same goods and services as yours. For example, the Thai Baht currency crisis in 1997 snowballed into a regional crisis that affected the political and economic situation of the neighbouring countries until the intervention of the IMF and other world governing bodies.*

6.3 Your Moderated Yearly Luck

Table 6-2 - Yearly Luck after moderation with the relevant Luck Pillar

2015	2016	2017	2018	2019
Mixed	Good	Good	Good	Good

6.4 Your Personalized Luck Bar Chart



Source : <http://www.adeviny.com>

By : Master Richard Tan

Figure 6-2 - Moderated Monthly Luck

Note 1:

The Monthly Luck is taken from the Hsia Calendar, which is the Chinese Solar Calendar and is similar to the Gregorian Calendar. However, the first day of the month starts on average one week later, which usually begins on the second week of month and ends on average one week into the following month. The Monthly Luck will fluctuate from month to month and it is not consistent throughout the year, whereby certain months are better or worse than the others. Therefore the variation of the Monthly Luck should be read and interpreted in conjunction with the overall yearly luck

Note 2:

Please refer to Appendix D for an explanation of the luck ratings. A proper understanding and interpretation of your own ratings will help you to make better

decisions, appropriate for the luck rating applicable during the period concerned.

7 Advice on your Personal Feng Shui

Table 7-1 - Best Direction, Lucky No., Colours and Gemstones

BEST DIRECTION	MOST LUCKY NO.	BEST COLOUR	SUPPLEMENTARY COLOUR	GEMSTONES
North	1	Black	Grey Dark Blue	Aquamarine Turquoise Opal Sapphire Topaz (All Blue)

Table 7-2 - Second Best Direction, Lucky No., Colours and Gemstones

SECOND BEST DIRECTION	OTHER LUCKY NO.	OTHER COLOUR	OTHER SUPPLEMENTARY COLOUR	OTHER GEMSTONES
Southwest	2	Yellow	Beige Light Brown	Opal(Yellow) Topaz(Yellow)

Table 7-3 - Likely Health Problems

INTERNAL ORGAN	SENSORY ORGANS	OTHER PARTS OF YOUR BODY
Small Intestines or Heart	Nose	Skin Intestine Teeth

8 Exemption Clause

The information in this report on your fortune reading is based on reliable sources with extensive, analytical research and expert interpretations, which are believed to be authentic and reliable.

Comprehensive case studies have also been carried out with experts' opinions and interpretation that are incorporated into the program before the compilation of this report. However, it should not be solely depended upon to make your decisions in life as the predictions are used for reference only. No liability can be accepted for any loss arising from the use of this report on your predictions. This report is derived from the correct birth data that is presented by you.

Appendix A - Your Master Chart

Guidelines for using the Appendices

The remaining sections, Appendix A, B and C cover the more technical aspects and is mainly for reference purposes.

It is meant only for those with a good knowledge of this Ancient Art of fortune reading.

Appendix A, B and C are the workings represented in the form of tables and notes to form the basis for deriving the writeups, charts, tables and advice in Sections 2 to 7.

You should refer to Appendix D for the categorization of the 5 different states of your luck classified as Excellent, Good, Mixed, Poor and Caution for seeking the relevant advice. Appendix D should be used for reference to Section 6.1 to 6.4 pertaining to the categorization of the state of your luck in the form of charts, graphs and tables.

Table A-1 - Your Master Fortune Chart

时 HOUR	日 DAY	月 MONTH	年 YEAR	说明 PARTICULARS
10:00 am	8	June	1955	Date of Birth
辛 Yin Metal	庚 Yang Metal	壬 Yang Water	乙 Yin Wood	天干 Heavenly Stem
巳 Yin Fire	子 Yang Water	午 Yang Fire	未 Yin Earth	地支 Earthly Branch
Birth	Death	Childhood	Adulthood	12 Stages of The Life Cycle ¹
Strong	Weak	Weak	Weak	State of Life Cycle
蛇 Snake	鼠 Rat	马 Horse	羊 Sheep	生肖 Animal Sign in the Earthly Branch
戊 Yang Earth 丙 Yang Fire 庚 Yang Metal	癸 Yin Water	丁 Yin Fire 己 Yin Earth	乙 Yin Wood 己 Yin Earth 丁 Yin Fire	藏干 Hidden elements of the Heavenly Stem in the Earthly Branch

Source : <http://www.adevstiny.com>

By : Master Richard Tan

Note¹:

The 12 stages of the Life Cycle indicate the strength or weakness of the self-element in relation to the year, month, day and hour of birth. The name given only denotes the relative strength and weakness and not the literal meaning.

Note:

The following adjustments were made to your birth time (Jun 8, 1955 10.00 AM)

- 1. Daylight Savings Time : None*
- 2. Time offset from GMT : Deducted 43 minutes*

These adjustments were made based on the following parameters :

City Born : Kuala Lumpur
Longitude : 101.6955° E

Time Zone : Asia/Kuala_Lumpur
Reference Meridien : 112.5° E

As a result, the local mean time of Jun 8, 1955 9.16 AM was used in the BaZi calculations for this report.

Table A-2 - Total Number of Elements

ELEMENT	木 WOOD		火 FIRE		土 EARTH		金 METAL		水 WATER		TOTAL	
	Yin	Yang	Yin	Yang	Yin	Yang	Yin	Yang	Yin	Yang	Yin	Yang
SUB-TOTAL	2	0	2	1	2	1	1	2	1	1	8	5
TOTAL NO:	2		3		3		3		2		13	

Appendix B - Combinations and Clashes

B.1 Major Combinations and Clashes

Please see Table B-1 for the combinations and clashes between the elements in the Heavenly Stem and the Earthly Branch for the Four Pillars of destiny or Eight Characters of your Fortune Chart.

Table B-1 - Combinations and Clashes

地支 Earthly Branch					
说明 PARTICULARS	时 HOUR	日 DAY	月 MONTH	年 YEAR	理论 RESULTANT ELEMENT
三会 Seasonal Combination	巳 Yin Fire		午 Yang Fire	未 Yin Earth	Fire

B.2 Minor, Ineffective and Unapproved Combinations/Clashes

Heavenly Stem Clashes

The following clash is not effective as the 2 elements involved are too far away from each other.

Table B-2 - Distant Clash

说明 PARTICULARS	时 HOUR	日 DAY	月 MONTH	年 YEAR	Remarks
距离 Distant Clash	辛 Yin Metal			乙 Yin Wood	Distant Clash

Earthy Branch Combinations/Clashes*Table B-3 - Six Clashes*

说明 PARTICULARS	时 HOUR	日 DAY	月 MONTH	年 YEAR	Remarks
六冲 Six Clashes		子 Yang Water	午 Yang Fire		Ineffective

Table B-4 - Six Combination

说明 PARTICULARS	时 HOUR	日 DAY	月 MONTH	年 YEAR	Remarks
六合 Six Combination			午 Yang Fire	未 Yin Earth	Ineffective

Table B-5 - Conflicted Clash

说明 PARTICULARS	时 HOUR	日 DAY	月 MONTH	年 YEAR	Remarks
相害 Conflicted Clash		子 Yang Water	午 Yang Fire	未 Yin Earth	Blocked Clash

Appendix C - Your Luck Pillars

Please refer to Table C-1 for your Luck Pillars in periods of 5 and 10 years.

Table C-1 - Your Luck Pillars in periods of 5 and 10 years

90-94	80-84	70-74	60-64	50-54	40-44	30-34	20-24	10-14	Starting Age From - To
辛 Yin Metal	庚 Yang Metal	己 Yin Earth	戊 Yang Earth	丁 Yin Fire	丙 Yang Fire	乙 Yin Wood	甲 Yang Wood	癸 Yin Water	Heavenly Stem
辛 Yin Metal	金 Metal	己 Yin Earth	戊 Yang Earth	木 Wood	水 Water	金 Metal	甲 Yang Wood	癸 Yin Water	Combination with the H.S. of the Fortune Chart (Resultant Element)
95-99	85-89	75-79	65-69	55-59	45-49	35-39	25-29	15-19	Starting Age From - To
卯 Yin Wood	寅 Yang Wood	丑 Yin Earth	子 Yang Water	亥 Yin Water	戌 Yang Earth	酉 Yin Metal	申 Yang Metal	未 Yin Earth	Earthly Branch
卯 Yin Wood	寅 Yang Wood	土 Earth	子 Yang Water	亥 Yin Water	戌 Yang Earth	酉 Yin Metal	水 Water	未 Yin Earth	Combination with the E.B. of the Fortune Chart (Resultant Element)
Spring		Winter			Autumn			Summer	Seasons

Appendix D - Explanation of Luck Pillar Ratings

EXCELLENT :

This is the most lucky or auspicious period in your luck pillar, which varies from year to year due to the yearly elemental influence on your destiny. During this auspicious period you will encounter exceptional good luck and anything you do will produce exceptionally good results, which you have not previously experienced. Any effort or plan can turn into profitable ventures if you can implement it during this period. So this is the most appropriate time for you to fulfill your dream or ambition.

Extra effort will greatly increase your success so you are advised to capitalize on it during this period for accumulation of wealth, fulfillment of lifetime ambition, educational accomplishment and any other personal aspiration. You are strongly advised to fulfill whatever your ambition or accumulate as much wealth as possible during this time and not to spend lavishly as you might not have the same opportunity in the future. So please try to save for rainy days.

For those who intend to further your academic education please do so as you might not have another chance once this era has passed. See your luck pillar to make better decision.

During this period you are in a neuropsychological state, experiencing such feelings like pleasantness, happiness, confidence, love, ecstasy and excitement. Since this is an excellent period, certain events or circumstances such as better health, career prospects, increase in income, financial stability and other auspicious occasions will propel you to have a wonderful feeling such as good personal relationships with your loved ones and other people around you. However, such feelings can be affected if during this phase you experience a poor or lackluster yearly and monthly luck.

GOOD :

This is also the lucky period(s) in your lifetime where everything you do or intend to do will come true. Effort need to be put in otherwise the good luck will not be tapped and it might not come to you again, depending on the forthcoming luck pillar. See your own luck pillar to give you a better idea as to what is in store for you in the future. Though this period is good it is advisable for you to obtain your accomplishment whatever you set to do. Within this period it varies from year to year due to the various different elemental influence for each year. This good luck pillar will enable you make better judgment and decision.

During this period you are in a neuropsychological state, experiencing such feelings like being neutral, pleasantness, confidence, joy, love and happiness. However, such feelings can be affected if during this phase you experience a poor or lackluster yearly and/or monthly luck. Since this luck period is a good one,

certain events or circumstances like good health, career opportunity, financial stability and other auspicious occasions will stimulate you to have such nice feeling, like good personal relationships with your loved ones and other people around you. However, such feelings will turn fantastic and exciting if encountering an excellent yearly and monthly luck. Likewise, it can also be drastically affected if during this phase you experience a poor or lackluster year and monthly luck.

MIXED :

During this period you will encounter mixed experiences. Sometimes you will encounter obstacles but generally with a bit of extra effort it can be overcome. This mixed period shown in your luck pillars will be influenced by the yearly luck, which varies from year to year. Obviously extra effort can see you through, though it is not so smooth sailing compared with the good and excellent luck pillar, where less effort is needed for the same result. Be contented whatever you do and make yourself happy and do not expect too much otherwise you might be disappointed. Please do not try to be too ambitious as this is not the right period to have such ambition.

During this period you are in a neuropsychological state, experiencing various feelings ranging from pleasantness to unpleasantness, happiness to disappointment but most of the time are likely to be neutral throughout the period since this is considered as a mixed period. Occasionally you will experience any one of the above feelings as certain events or circumstances will influence your feelings drastically. However, such feelings will be improved if encountering an excellent yearly and monthly luck. Likewise, it can also be drastically affected if during this phase you experience a poor or lackluster yearly and monthly luck.

POOR :

In this period you will encounter obstacles in whatever endeavours you are doing. The sailing will not be smooth and this may cause some disappointments. Hence do not expect your efforts to be rewarded to the fullest. Knowing this in advance will put you in a better position to face such obstacles or disappointments that may arise. Try not to do something new, as it will not give you the desired result. Stay cool and do not feel antagonized and blame others when things do not turn up well. Just take it in your stride and look forward for a brighter future, as everybody in this world will encounter such a phase sometime in his lifetime. Take this as a learning phase and you can become a more understanding person and you can appreciate and differentiate what is good and bad.

During this period you are in a neuropsychological state, experiencing various feelings like being disgruntled, anxiety, sadness, unpleasantness and/or being neutral. Occasionally you are likely to experience any one of the above feelings as certain events or circumstances will influence and dictate your emotion or mood. However, such feelings will be improved if during this phase you experience a good or excellent yearly and monthly luck. You are advised to adopt a positive

mental attitude in order to contain and/or improve your emotion rather than letting it dictate your mood which may destroy long term relationships with your loved ones and others.

CAUTION :

During this period you need to be extra careful for whatever you do. Everything can be upside down and you have to be cautious not to do anything new or take up a new venture. Be patient and extra vigilant and hope this bad phase of your life will pass. So the best advice is try to stay put and continue be cautious whatever you are doing even though you might have to put up with any adversity or problem.

Unexpected happenings may happen like personal relationships especially with loved ones which may strain you but you are advised to bear with it for the time being. Financial problems and health may strike you at this lowest ebb of your life. So the best advice is, do not do something drastic which you may regret later on as certain drastic action can cause irrevocable damages.

Those of you who are in business should consider disposing your business earlier before the bad phase sets in if there is any good offer to purchase your business. If not, then downsizing will be the best option and try to reduce your gearing to zero or down to a manageable level. You are likely to experience this bad phase much earlier, say one year earlier if the next coming phase is bad. So make a wise decision and take appropriate action before it is too late.

During this period you are in a neuropsychological state, experiencing various feelings like being worried, fearfulness, sadness, frustration, depression, being disgruntled, frustration and remorse. You are likely to experience any one of the above feelings as certain inauspicious events or circumstances may influence and dictate your emotion and mood and put you in a predicament. However, such feelings may improve if during this phase you experience a good or excellent yearly and monthly luck. You should adopt a very positive mental attitude in order to avoid such paralyzing feelings of helplessness or fearfulness from affecting your health and destroying long term relationships with your loved ones and others.